



SUORIN

SUORIN Air Mini

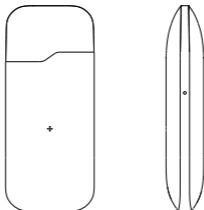
Refillable E-Cigarette

Please save this manual and read it fully before you start using this product as it contains important information.

User Manual

V2022-04

Length	Width	Height
75mm	32.3mm	13.7mm



Product Specifications

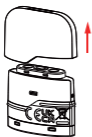
Coil Resistance	1.0Ω
Cartridge Capacity	2mL
Max Output	14W
Charging Current	1000mA
Battery Capacity	430mAh
Material	Aluminum alloy + PCTG
Preferable Operating condition	Temperature 10° C - 45° C / 50° F - 113° F Humidity: up to 85% relative humidity
Preferable Storage & Transportation Condition	Temperature 15° C - 25° C / 32° F - 77° F Humidity: 45% ~ 75% relative humidity

Operation Guide

How to set up the device

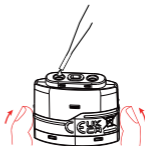
Step 1

Open the silicone plug



Step 2

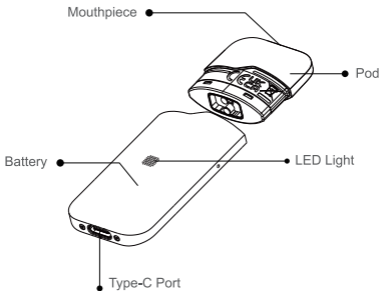
Pinch the sides of the cartridge with your fingers when filling



Note:

1. Lightly snap sides, then pull off.
2. Need to install drip-tip within 5 seconds after completing filling.
3. How to install drip-tip: hold the cartridge and press the drip-tip in slowly.

Components



Instructions

1. Pull the silicone plug out and fill the cartridge with e-liquid. Push the silicone plug back in after finishing filling.
2. Please wait 5-8 minutes after filling e-liquid into a new cartridge and insert the cartridge into the device before using the device to inhale a puff for the first time.
3. Use the charging cable included with the device to recharge the battery. Please immediately unplug the device once it is fully charged.
4. The intended service life of the cartridge is seven (7) days. You should replace the cartridge within seven (7) days after first filling it with e-liquid.

Indicator light and vibration feedback

Status	Indicator Light
Vaping time exceeds 5 seconds	Light Flash 10 Times
No atomizer detected	Light Flash 1 Times
Ohms too low	Light Flash 5 Times
Battery low	Light Flash 3 Times
Insert cartridge	Light Flash 1 Times
Charging	0~40% Red Light 40~75% Blue Light 75~95% Green Light 95~100% Green Light on

Notice



1. Let the cartridge stand up-straight for 5-8 minutes to make sure the cotton is fully saturated.
2. This product is only available for Suorin Air Mini cartridges.
3. Dispose of the contents/container in accordance with local laws.
4. It is not recommended for minors and non-smokers.

Troubleshooting

1. If the device's battery can not be charged, check that the charger cord is fully connected to the Type-C port.
2. If aerosol is not emitted normally when puffing on the device:
 - a. Confirm that the cartridge is properly in place and tightly connected to the device.
 - b. Confirm that sufficient e-liquid remains in the cartridge. If not, refill the cartridge.
 - c. Confirm that adequate charge remains in the battery.
If not, please charge as soon as possible.
If the product still does not work, email our customer service center at info@suorin.com for further assistance.



SAFETY WARNINGS:

- Nicotine is a highly addictive and toxic substance. Use care when re-filling and handling this device and refilling the cartridges with e-liquid.
- For use with nicotine-containing e-liquids only. Not for use with high viscosity liquids, waxes, or oils, including THC oils, cannabidiol oils, or other controlled substances. Use with such substances may lead to malfunction of or damage to the product and can result in severe illness or injury.
- When refilling the cartridge with nicotine-containing e-liquid, avoid contact with skin and eyes. If accidental contact with the skin or eyes occurs, rinse with plenty of water and contact a medical professional if irritation occurs or persists.
- Keep the device, all cartridges, and all e-liquid containers out of the reach of children and pets, as this product presents both a poisoning and choking hazard.
- In the event of accidental ingestion of e-liquid, seek help from your local poison control center immediately (in USA region please contact 1-800-222-1222).
- Only charge the device indoors.
- Do not use this device or its cartridges with cartridges, batteries, coils, chargers, or other replacement parts from other manufacturers, as such may lead to an increased risk of explosion, fire, or nicotine poisoning, and can result in severe illness, injury, or death. Use only Suorin-brand compatible replacement parts.
- Do not attempt to disassemble or modify this product in any way, as such may lead to malfunction of or damage to the product, increased risk of explosion, fire, or nicotine poisoning, and can result in severe illness, injury, or death.
- Do not use this product when flammable materials, liquids, or gases, including oxygen, are present or in use.
- Do not use this product if it appears damaged, has been modified, disassembled, or immersed in water.

- When traveling on an airplane or other pressurized environment, remove the cartridge from the device and store it upside-down to avoid leaking of e-liquid from the cartridge.
- Do not use this product with an empty cartridge, as such may result in increased exposure to harmful substances.



HEALTH WARNINGS:

- This product is intended for use by existing cigarette smokers only and should not be used by non-smokers or individuals under the legal age to purchase e-cigarettes or vapor products in their respective jurisdictions.
- This product should not be used by individuals with high blood pressure, heart disease, diabetes, respiratory illness or disease, asthma, gastritis, gastric ulcer, duodenal ulcer, gastro-esophageal reflux disease or who are allergic to any of the listed ingredients.

This product should not be used by pregnant, suspect they may be pregnant or plan to become pregnant, or who are breastfeeding. Exposure to nicotine is harmful to fetal and infant development.

- You should discontinue use of this product and seek the attention of a medical professional if you feel dizzy, faint, or experience difficulty breathing while or immediately after using this product.
- Possible effects of nicotine consumption include: Coughing, headache, irritation of the mouth and throat, (nasal congestion, aphthous ulcers, sore throat, anxiety, insomnia, depression, discomfort, nausea, dry mouth, heartburn, aching joints, diarrhea, meteorism, allergy skin eruption, shortness of breath, labored breath, tightness of the chest, swelling of the face, tongue and lips), feeling thirsty, hiccups, chest pain, fever, irregular or increased heartbeat, dizziness, and sleepiness.

Seek the advice of a medical professional if you experience any of these symptoms.

- Possible symptoms of a nicotine overdose include: nausea, salivation, abdominal pain, diarrhea, sweating, headache, dizziness, hearing problems, weakness, and palpitation.

Discontinue use and seek immediate medical attention if you experience any of these symptoms while or shortly after using this product.

Shenzhen Youme Information Technology Co.,Ltd.

E-mail:info@suorin.com

Web:www.suorin.com

Instagram:@Suorinofficial

Add:201, Building B, Dianlian technology building, Nanhuan Avenue,
Mashantou Community, Matian street, Guangming District, Shenzhen





CAUTION



- ⦿ Please let the cartridge stand for 5-8 minutes after filling e-liquid. Make sure the cotton is fully saturated.
- ⦿ It is recommended to change a new cartridge after 5-8 times e-liquid filling or within 7 days after the 1st oil filling